

REPORT OF THE LHD MONITORING TEAM

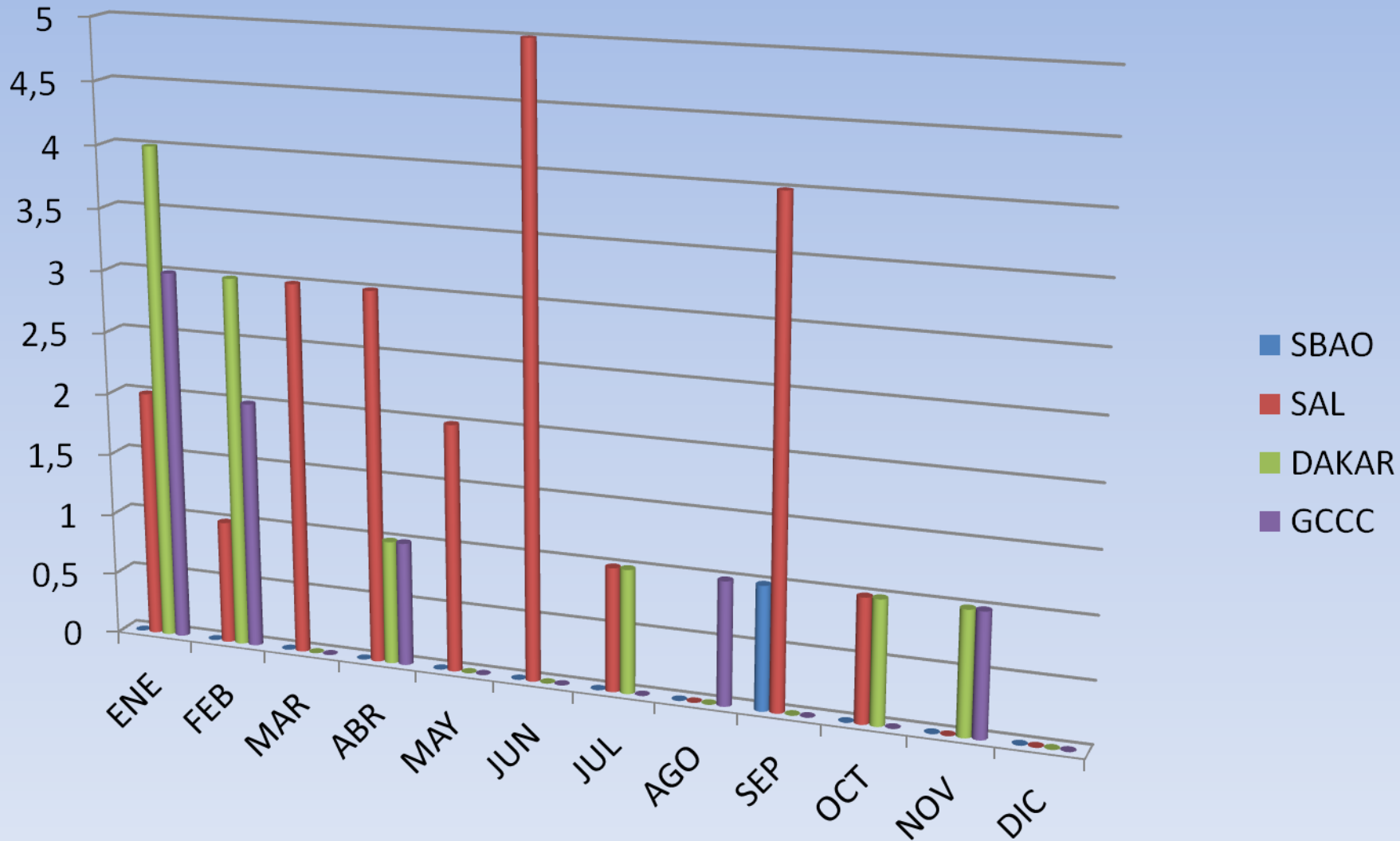
EUR/SAM Corridor



ANNALISYS OF REPORTED LHD DURING 2015

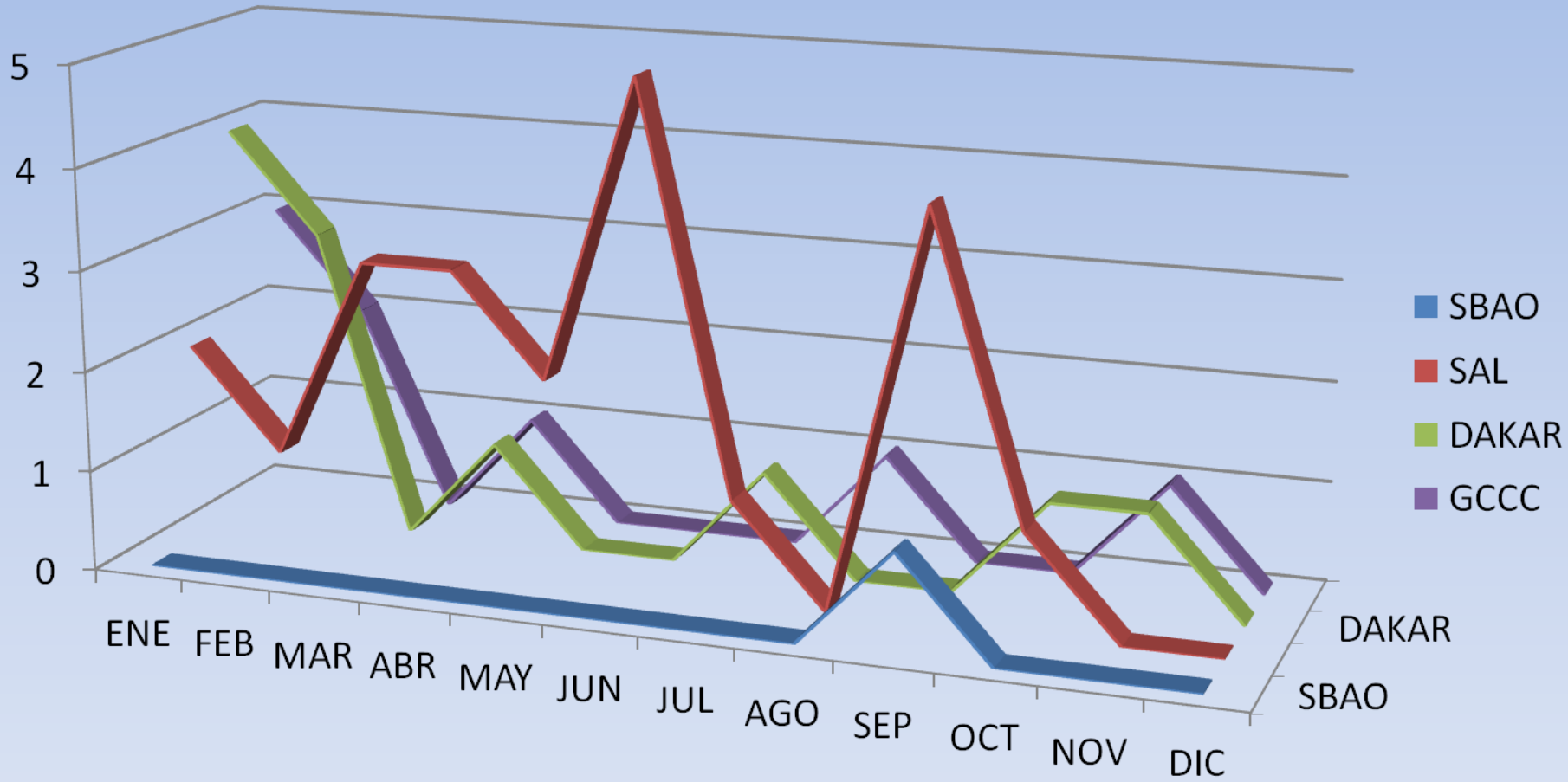
Number of LHD's reported

TOTAL LHD'S 2015: 42

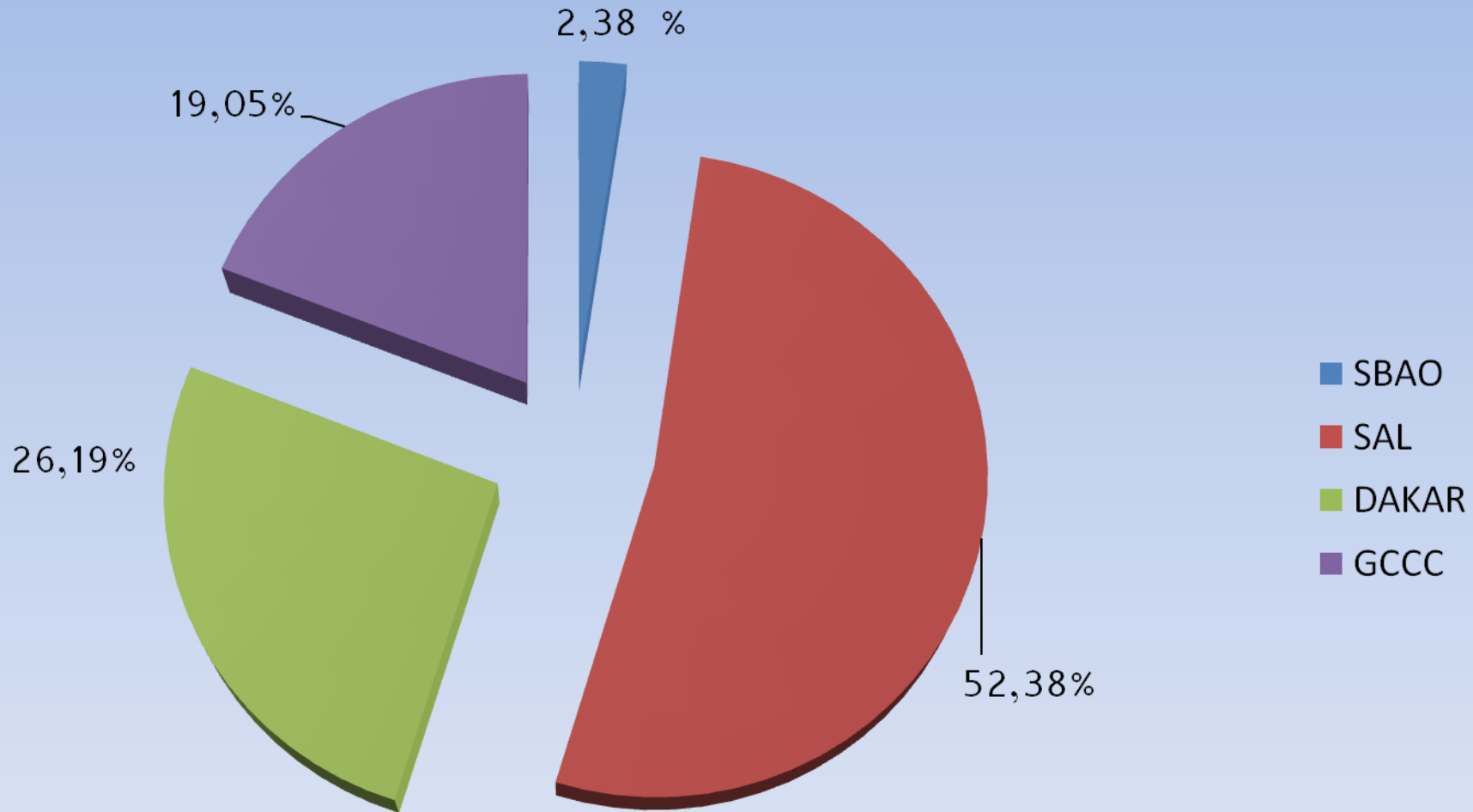


Number of LHD's reported

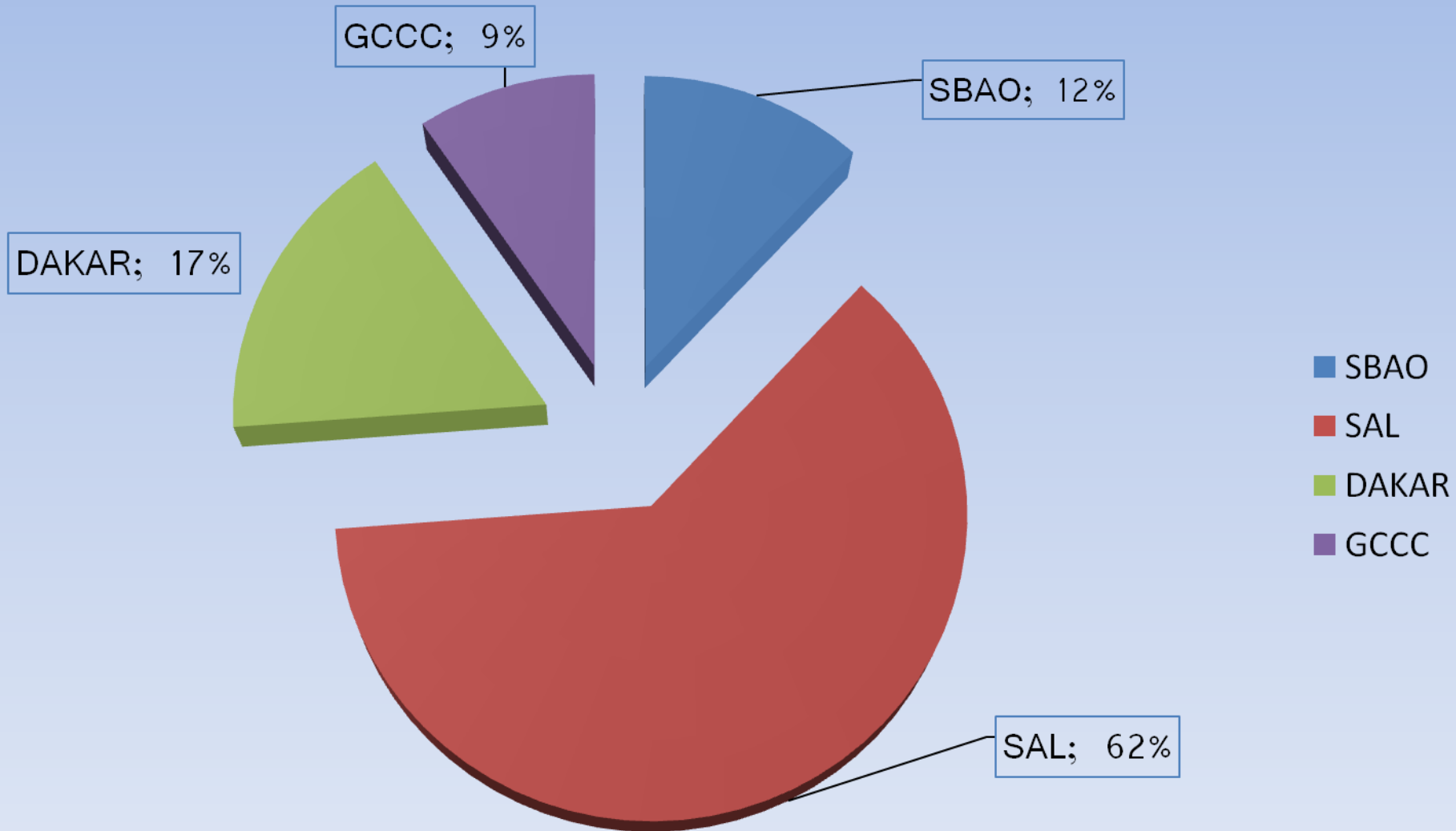
TOTAL LHD'S 2015: 42



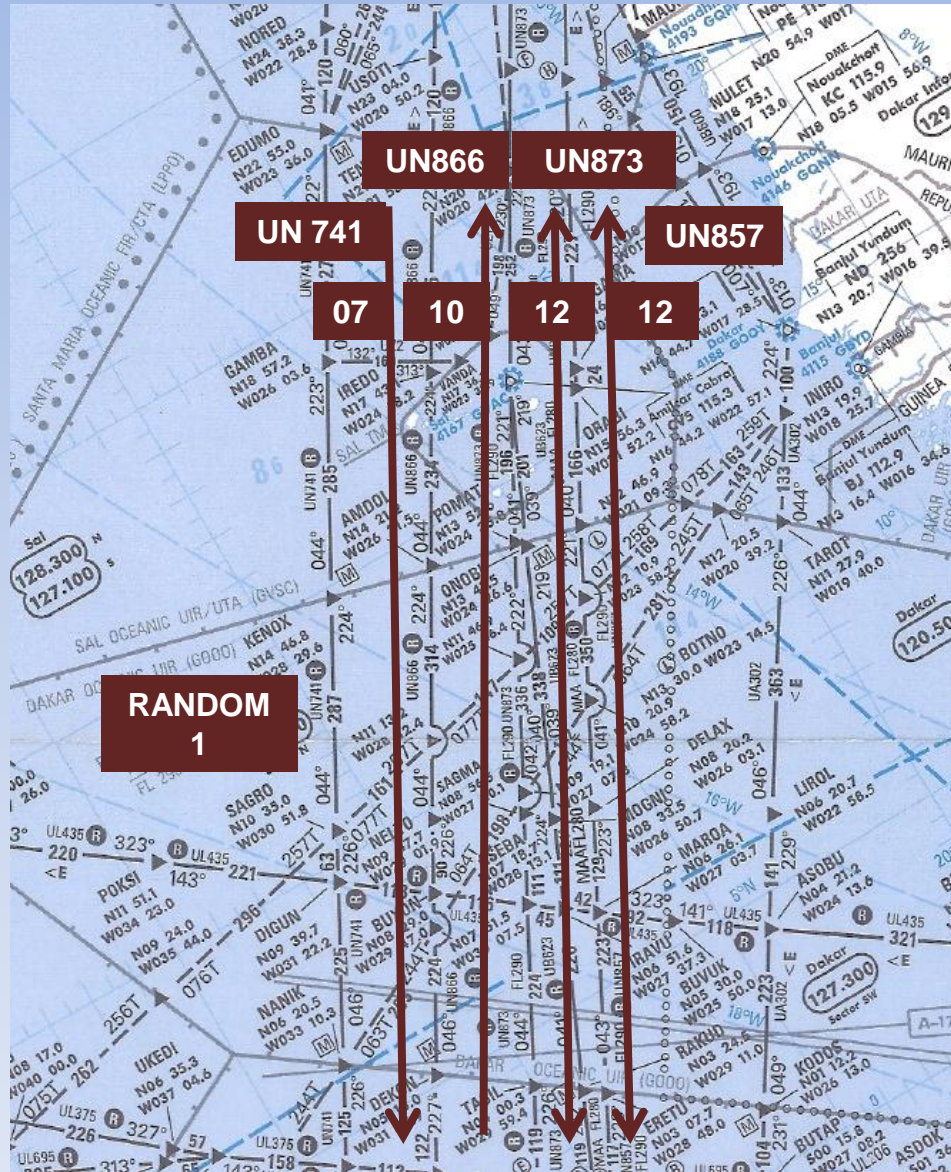
Percentage of LHD's reported per region



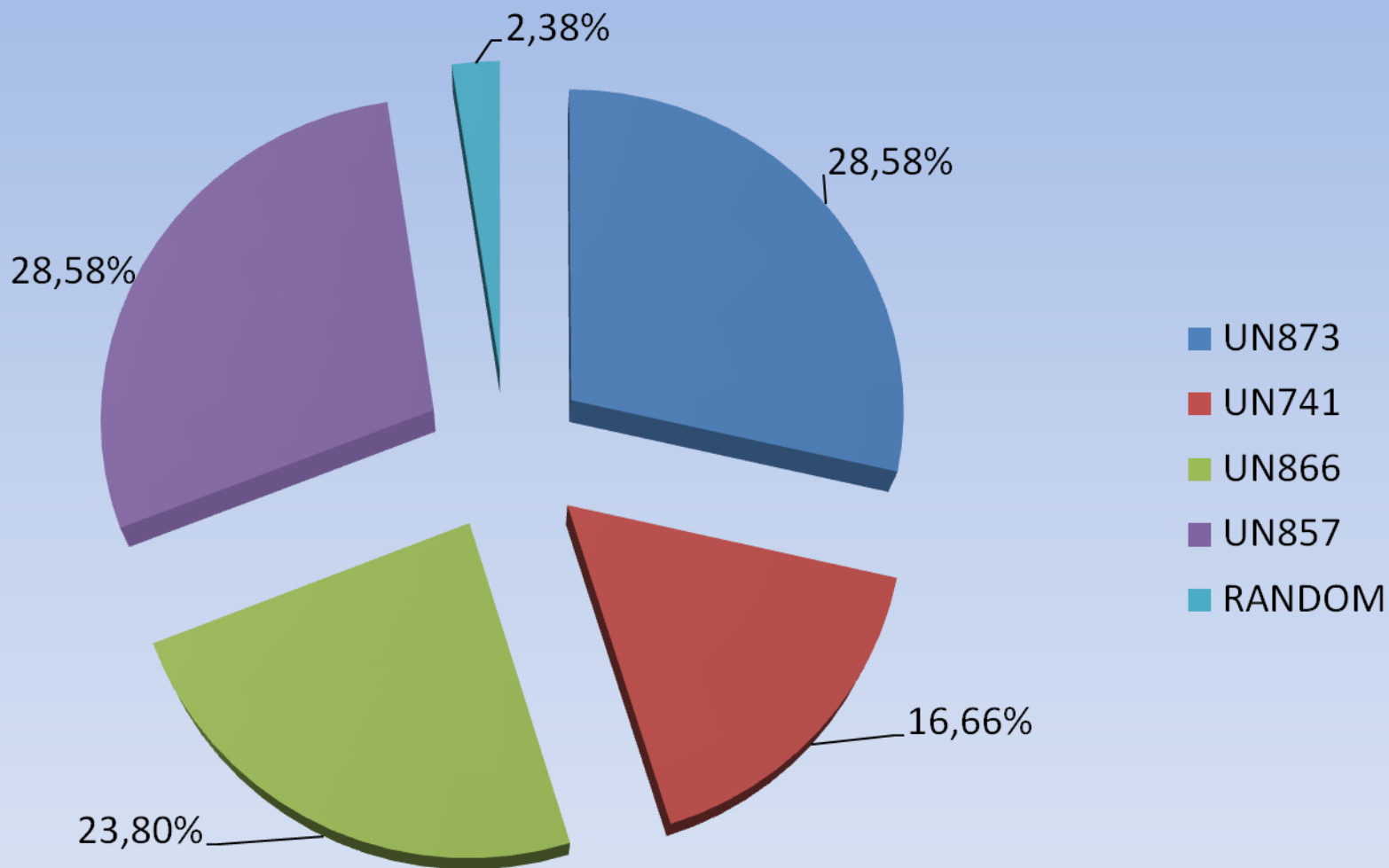
Percentage of LHD's Contribution per region



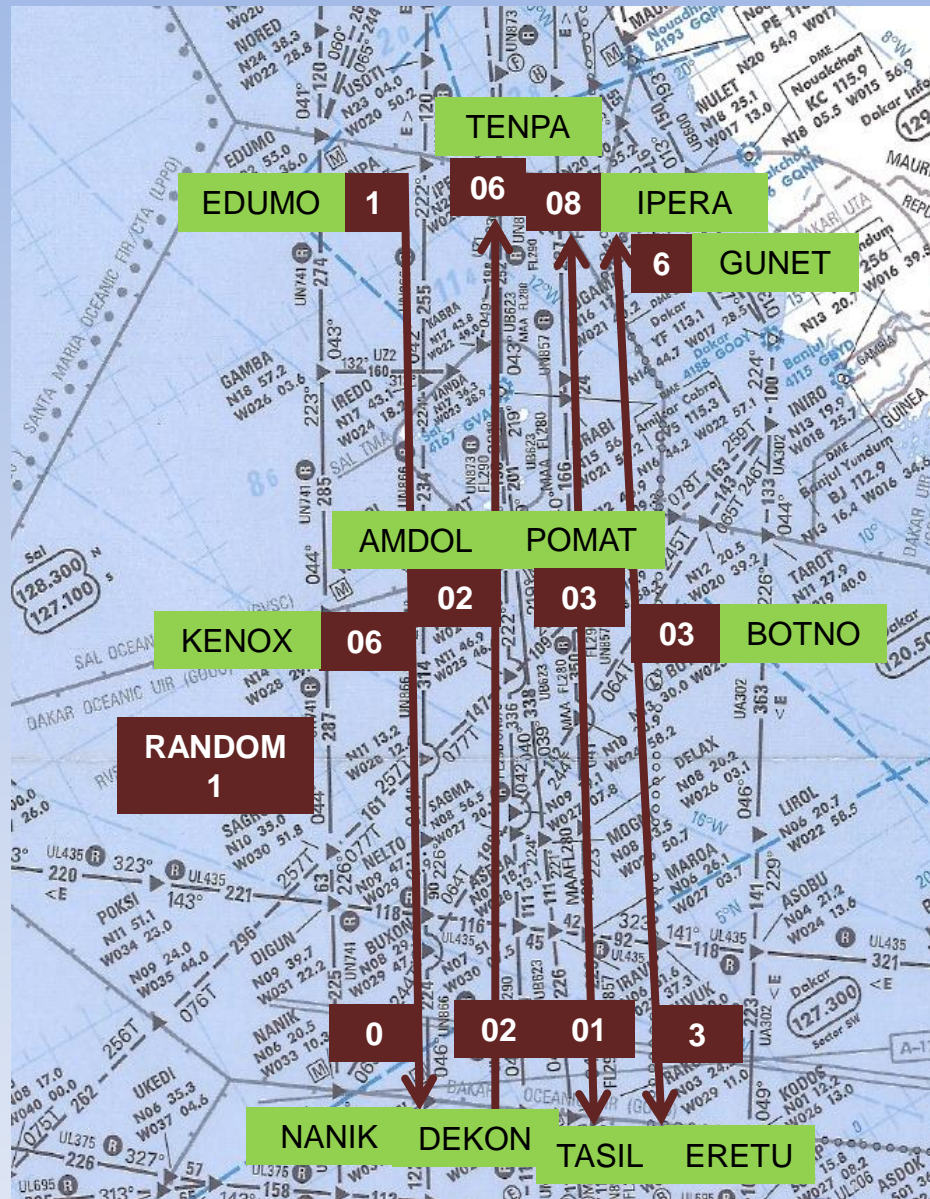
Distribution of LHD's per ATS route



Percentage of LHD's per ATS route



Distribution of LHD per Fix Point



Percentage of LHD'S Contributing Factors

