



***AIR TRAFFIC STATISTICS OF THE  
EUR/SAM CORRIDOR  
2012***

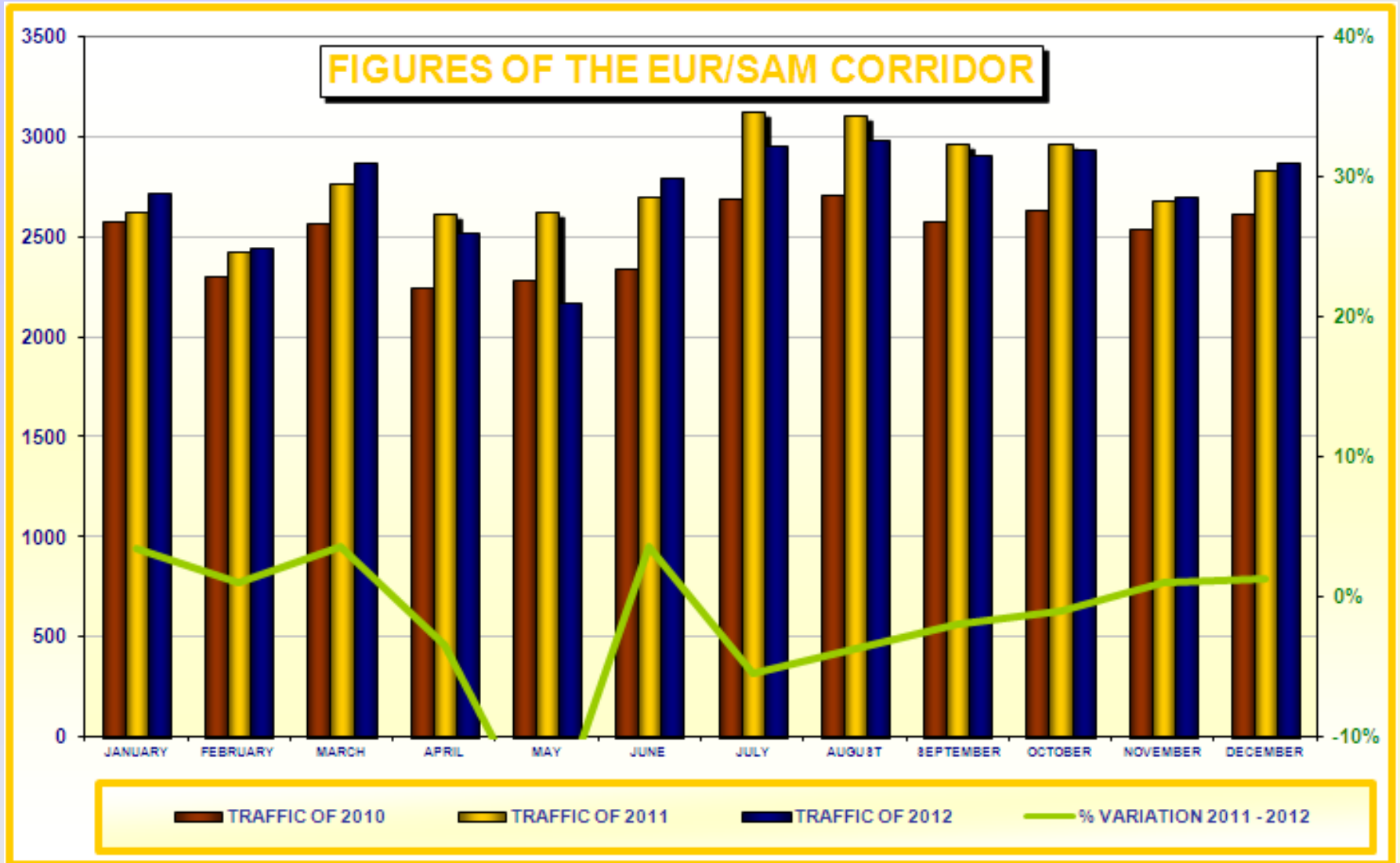


# **DATA COLLECTION**

- **THE NECESSARY FLIGHT PLAN INFORMATION TO PERFORM THIS STUDY IS OBTAINED FROM PALESTRA (AENA'S DATA BASE):**
  - **THIS FLIGHT PLAN DATA CONTAINS INITIAL FLIGHT PLAN INFORMATION THAT IS UPDATED BY RADAR AND CONTROLLERS WITH PILOT POSITION REPORTS.**
  - **THE AIR TRAFFIC MOVEMENTS REFLECTED IN THIS STUDY ARE:**
    - **ALL AIRCRAFTS USING UN741, UN866, UN873 AND UN857 WHOSE FLIGHT PLANS CONTAINS INFORMATION ABOUT EDUMO, TENPA, IPERA AND GUNET FIX POINTS.**
    - **AIRCRAFT USING THE RANDOM ROUTE.**
  - **THIS STUDY DOES NOT REFLECT:**
    - **TRAFFIC NOT OVERFLYING CANARIES FIR/UIR.**
    - **DATA FROM EAST-WEST FLOWS CROSSING THE EUR-SAM CORRIDOR.**
    - **SOUTHBOUND TRAFFIC TO/ FROM CAPE VERDE.**

# GLOBAL FIGURES OF THE EUR/SAM CORRIDOR

MONTH	SOUTHBOUND		NORTHBOUND		TOTAL TRAFFIC IN THE CORRIDOR						% VARIATION	
	2011	2012	2011	2012	2010	DAILY	2011	DAILY	2012	DAILY	2010 - 2011	2011 - 2012
JANUARY	1155	1163	1469	1551	2580	83	2624	85	2714	88	2%	3%
FEBRUARY	1146	1061	1275	1385	2305	82	2421	86	2446	84	5%	1%
MARCH	1266	1337	1502	1532	2571	83	2768	89	2869	93	8%	4%
APRIL	1171	1038	1442	1486	2250	75	2613	87	2524	84	16%	-3%
MAY	1131	1027	1496	1140	2288	74	2627	85	2167	83	15%	-18%
JUNE	1257	1333	1442	1463	2336	78	2699	90	2796	93	16%	4%
JULY	1464	1386	1662	1569	2692	87	3126	101	2955	95	16%	-5%
AUGUST	1441	1410	1660	1576	2709	87	3101	100	2986	96	14%	-4%
SEPTEMBER	1399	1410	1562	1494	2579	86	2961	99	2904	97	15%	-2%
OCTOBER	1403	1452	1564	1485	2635	85	2967	96	2937	95	13%	-1%
NOVEMBER	1319	1201	1358	1503	2539	85	2677	89	2704	90	5%	1%
DECEMBER	1274	1427	1556	1440	2618	84	2830	91	2867	92	8%	1%
<b>AVERAGE</b>	<b>1286</b>	<b>1270</b>	<b>1499</b>	<b>1469</b>	<b>2509</b>	<b>82</b>	<b>2785</b>	<b>92</b>	<b>2739</b>	<b>91</b>	<b>11%</b>	<b>-2%</b>





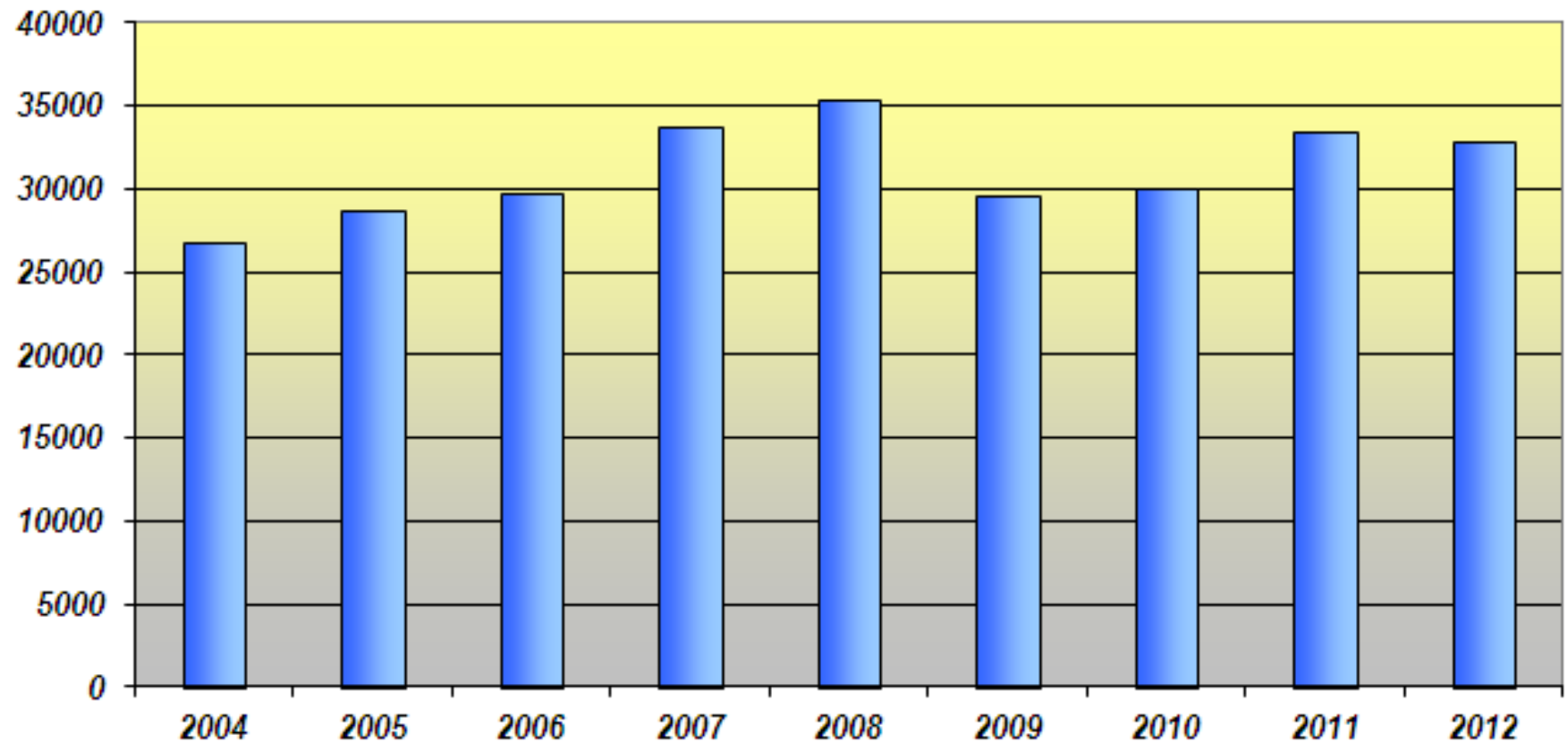
## NUMBER OF MOVEMENTS

FIGURES OF	SOUTHBOUND	NORTHBOUND	TOTAL TRAFFIC IN THE CORRIDOR	MONTHLY	DAILY
2004	13108	13685	26793	2233	73
2005	14088	14674	28762	2397	79
2006	14651	15036	29687	2474	81
2007	16704	17004	33708	2809	92
2008	17024	18295	35319	2943	96
2009	14256	15366	29622	2468	81
2010	14083	16019	30102	2508	82
2011	15426	17988	33414	2784	92
2012	15245	17624	32869	2739	90



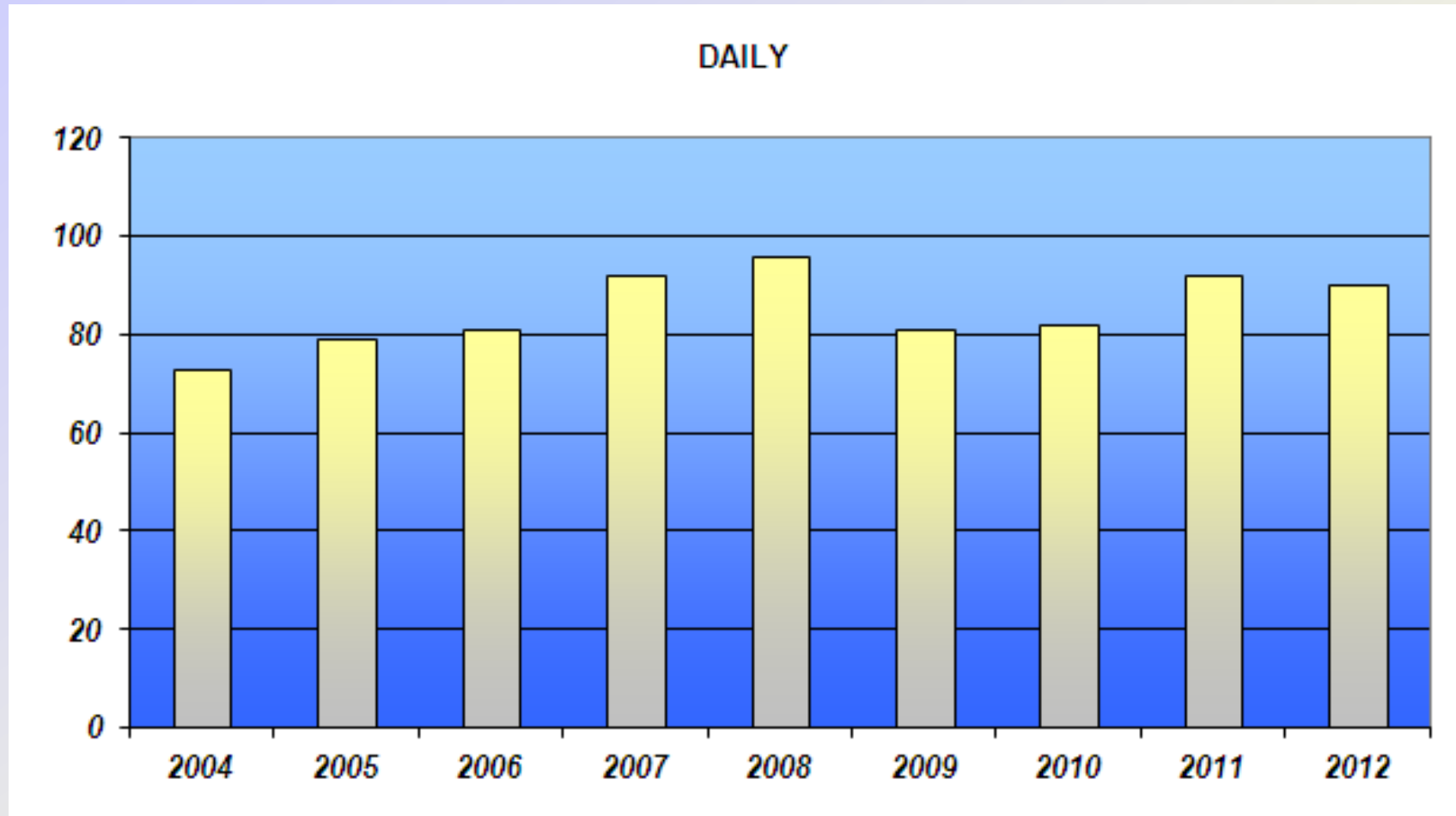
## NUMBER OF MOVEMENTS

TOTAL TRAFFIC IN THE CORRIDOR



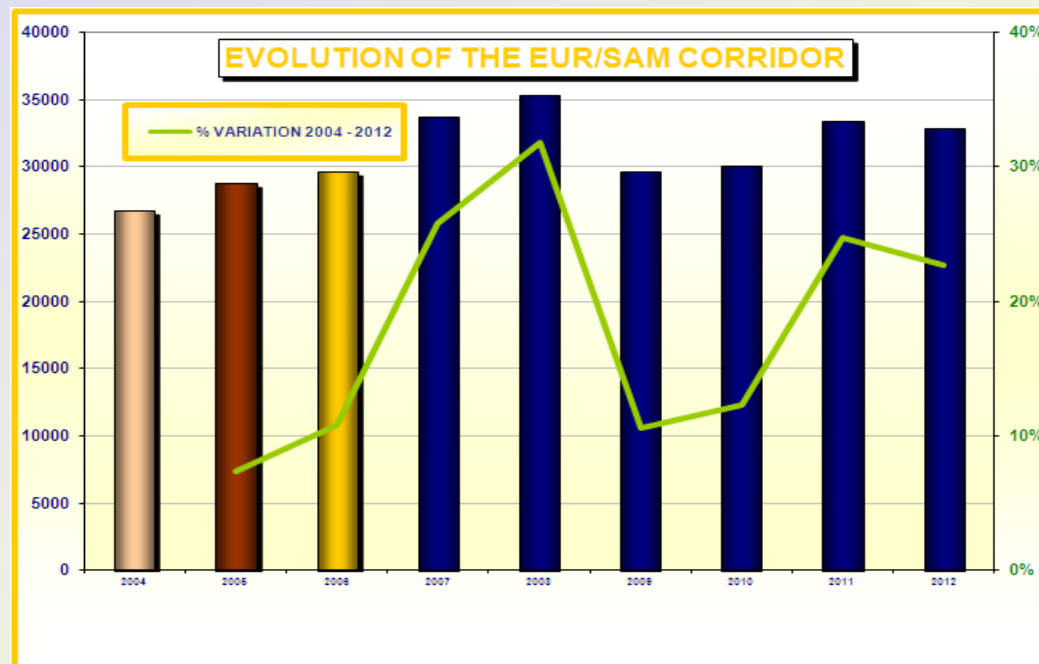


## AVERAGE OF DAILY TRAFFIC



# EVOLUTION OF THE EUR/SAM CORRIDOR

FIGURES OF	SOUTHBOUND	NORTHBOUND	TOTAL TRAFFIC IN THE CORRIDOR	% INCREASE FROM 2004
2004	13108	13685	26793	-
2005	14088	14674	28762	7.3%
2006	14651	15036	29687	10.8%
2007	16704	17004	33708	25.8%
2008	17024	18295	35319	31.82%
2009	14256	15366	29622	10.56%
2010	14083	16019	30102	12.35%
2011	15426	17988	33414	24.71%
2012	15245	17624	32869	22.68%





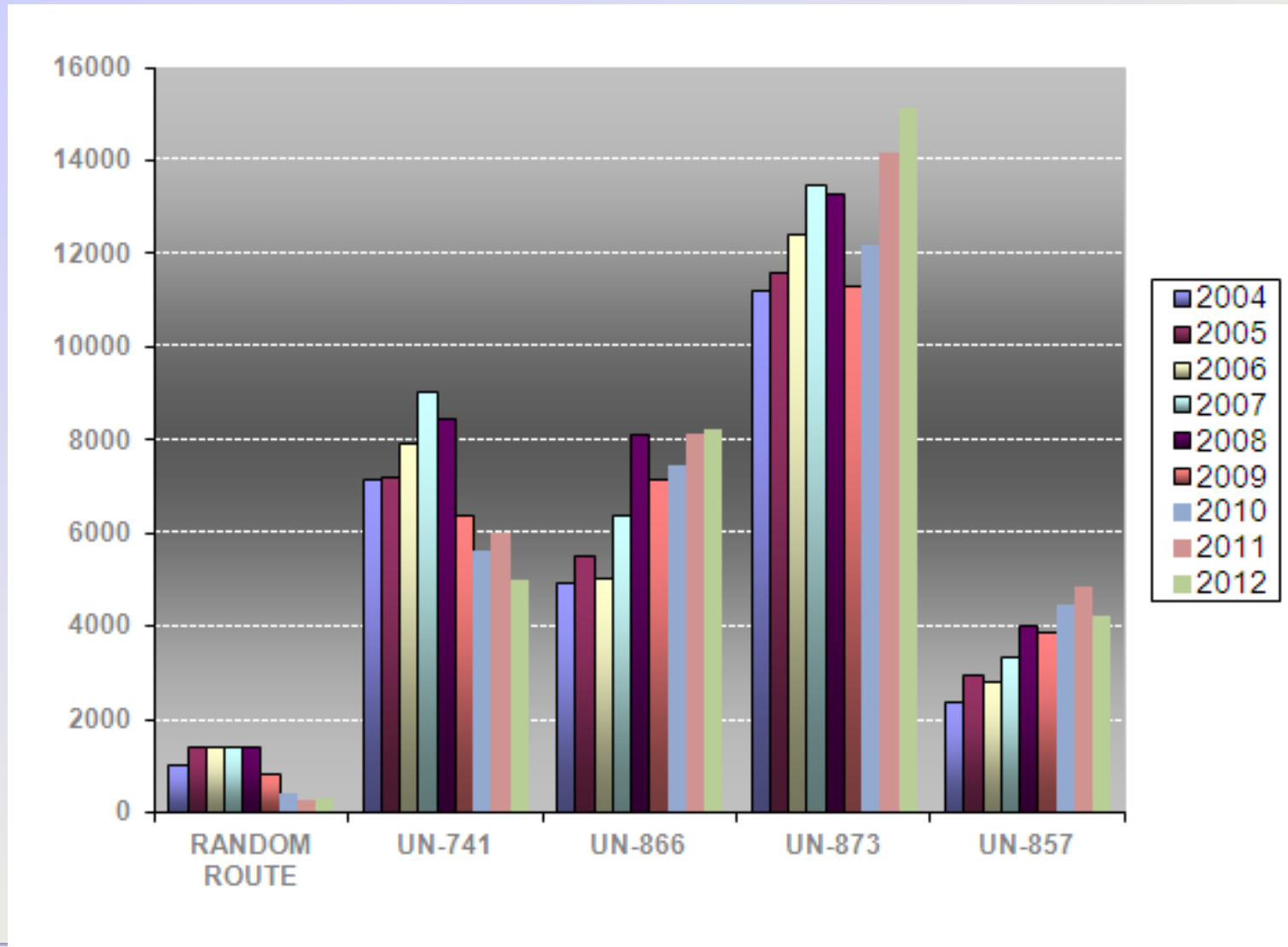


## TRAFFIC PER ATS ROUTES

	TOTAL	RANDOM ROUTE	UN-741	UN-866	UN-873	UN-857
2004	26793	1052	7179	4960	11219	2383
2005	28762	1413	7220	5534	11609	2986
2006	29687	1429	7935	5037	12442	2844
2007	33708	1424	9039	6389	13484	3372
2008	35319	1399	8486	8113	13314	4007
2009	29622	845	6383	7173	11320	3901
2010	30102	399	5605	7466	12170	4462
2011	33414	261	5999	8129	14172	4853
2012	32869	292	5009	8237	15129	4202



# TRAFFIC PER ATS ROUTES

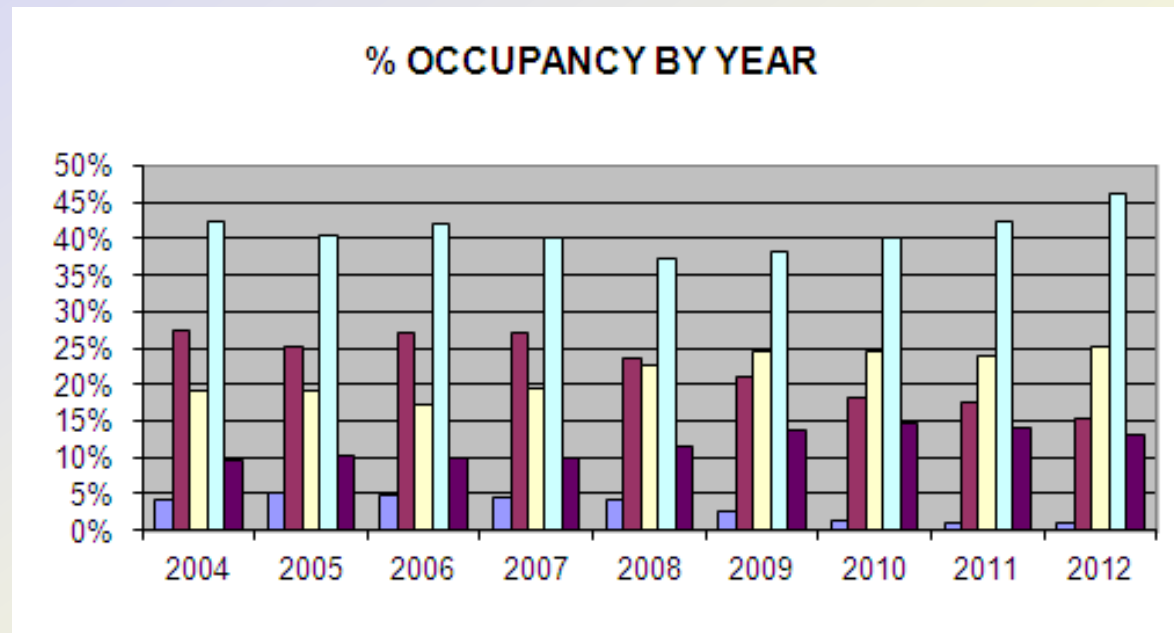
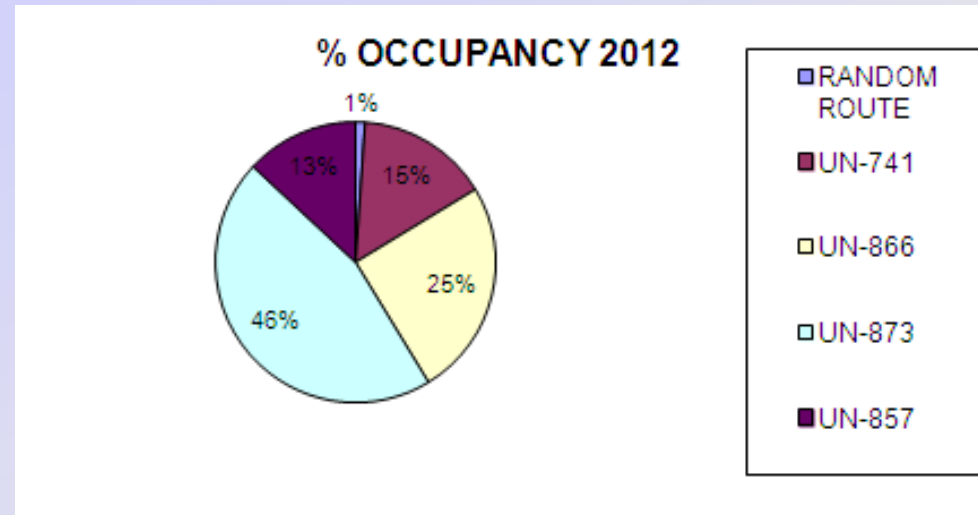


## DAILY TRAFFIC

	TOTAL CORREDOR	RANDOM ROUTE		UN-741		UN-866		UN-873		UN-857	
		DAILY	%	DAILY	%	DAILY	%	DAILY	%	DAILY	%
2004	73	3	4%	20	27%	14	19%	31	42%	7	10%
2005	79	4	5%	20	25%	15	19%	32	41%	8	10%
2006	81	4	5%	22	27%	14	17%	34	42%	8	10%
2007	92	4	4%	25	27%	18	20%	37	40%	9	10%
2008	97	4	4%	23	24%	22	23%	36	37%	11	11%
2009	81	2	2%	17	21%	20	25%	31	38%	11	14%
2010	82	1	1%	15	18%	20	24%	33	40%	12	15%
2011	92	1	1%	16	17%	22	24%	39	42%	13	14%
2012	91	1	1%	14	15%	23	25%	42	46%	12	13%



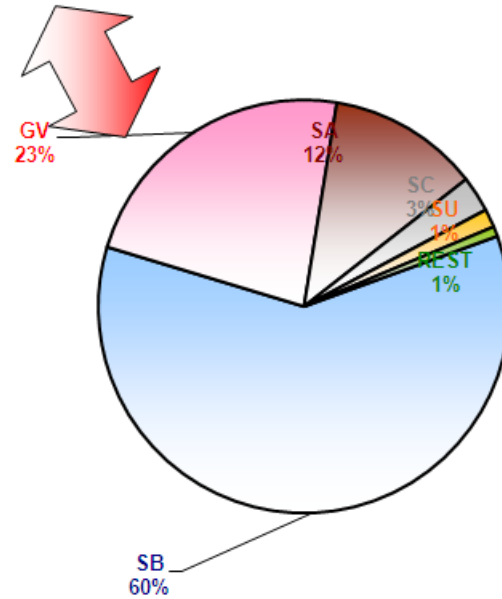
# DAILY TRAFFIC



# MAIN FLOWS

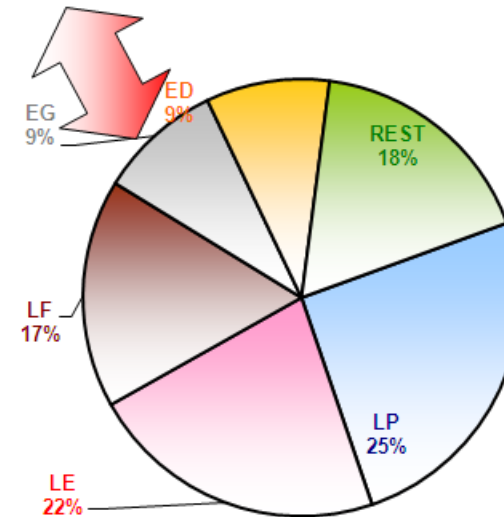
COUNTRY *	2011	2012	VAR %
SB	20914	19797	-5%
GV	6631	7517	13%
SA	4132	3898	-6%
SC	776	927	19%
SU	478	474	-1%
REST	483	256	-47%

\* ORIGIN / DESTINATION



COUNTRY *	2011	2012	VAR %
LP	8132	8323	2%
LE	7812	7264	-7%
LF	6058	5555	-8%
EG	2662	3007	13%
ED	3064	3004	-2%
REST	5686	5716	1%

\* ORIGIN / DESTINATION





# MAIN AIRPORTS

MAIN AIRPORT: **SBGR**

% CORRIDOR: **29.33%**

ATS ROUTE	SOUTHBOUND	NORTHBOUND	TOTAL	% PER ROUTE
RANDOM				
UN-741	1947		1947	20%
UN-866		3567	3567	37%
UN-873	1738	1503	3241	34%
UN-857	639	247	886	9%
<b>TOTAL</b>	<b>4324</b>	<b>5317</b>	<b>9641</b>	

MAIN AIRPORT: **LPPT**

% CORRIDOR: **29.33%**

ATS ROUTE	SOUTHBOUND	NORTHBOUND	TOTAL	% PER ROUTE
RANDOM				
UN-741	597		597	8%
UN-866	1	2142	2143	27%
UN-873	2629	2110	4739	61%
UN-857	171	178	349	4%
<b>TOTAL</b>	<b>3398</b>	<b>4430</b>	<b>7828</b>	

MAIN AIRPORT: **LEMD**

% CORRIDOR: **23.82%**

ATS ROUTE	SOUTHBOUND	NORTHBOUND	TOTAL	% PER ROUTE
RANDOM	217	24	241	4%
UN-741	1331	23	1354	22%
UN-866	2	1970	1972	32%
UN-873	817	652	1469	24%
UN-857	555	597	1152	19%
<b>TOTAL</b>	<b>2922</b>	<b>3266</b>	<b>6188</b>	

# MAIN AIRPORTS

MAIN AIRPORT: **LFPG**% CORRIDOR: **18.83%**

ATS ROUTE	SOUTHBOUND	NORTHBOUND	TOTAL	% PER ROUTE
RANDOM	43	2	45	1%
UN-741	1283		1283	25%
UN-866	1	876	877	17%
UN-873	659	1646	2305	46%
UN-857	477	49	526	10%
<b>TOTAL</b>	<b>2463</b>	<b>2573</b>	<b>5036</b>	

MAIN AIRPORT: **SBGL**% CORRIDOR: **15.32%**

ATS ROUTE	SOUTHBOUND	NORTHBOUND	TOTAL	% PER ROUTE
RANDOM				
UN-741	491	1	492	10%
UN-866		1316	1316	27%
UN-873	824	1309	2133	44%
UN-857	732	201	933	19%
<b>TOTAL</b>	<b>2047</b>	<b>2827</b>	<b>4874</b>	

MAIN AIRPORT: **SAEZ**% CORRIDOR: **14.83%**

ATS ROUTE	SOUTHBOUND	NORTHBOUND	TOTAL	% PER ROUTE
RANDOM				
UN-741	1169	3	1172	31%
UN-866	1	1302	1303	34%
UN-873	310	511	821	21%
UN-857	293	246	539	14%
<b>TOTAL</b>	<b>1773</b>	<b>2062</b>	<b>3835</b>	



## MAIN CITY PAIRS

CITY PAIR	TOTAL	% TOTAL
SAEZ <-> LEMD	2159	6.57%
SBGR <-> LFPG	2070	6.30%
SBGR <-> LEMD	1891	5.75%
SBGL <-> LFPG	1715	5.22%
SBGR <-> EDDF	1037	3.15%
SBGR <-> EGLL	1015	3.09%
GVNP <-> LPPT	970	2.95%
SBGR <-> LPPT	969	2.95%
SBGL <-> LPPT	949	2.89%
SCEL <-> LEMD	767	2.33%
GVAC <-> LPPT	749	2.28%
SBGR <-> LIMC	702	2.14%
SAEZ <-> LFPG	677	2.06%
SBGL <-> EDDF	634	1.93%
SBRF <-> LPPT	632	1.92%
SBSV <-> LPPT	601	1.83%
SBGL <-> EGLL	566	1.72%
SBCF <-> LPPT	520	1.58%
SBFZ <-> LPPT	515	1.57%
SBBR <-> LPPT	485	1.48%
REST	13246	40.30%





## EVOLUTION OF AO's

AIRCRAFT OPERATOR	2011	2012	VARIATION
TAP	6950	7158	3.0%
TAM	5641	4738	-16.0%
IBE	4046	3806	-5.9%
AFR	3458	3391	-1.9%
TCV	1232	1354	9.9%
DLH	1082	1163	7.5%
ARG	1128	1091	-3.3%
TOM	712	1006	41.3%
BAW	611	773	26.5%
KLM	441	639	44.9%
<b>REST</b>	<b>8113</b>	<b>7750</b>	<b>-4.5%</b>