



AIR TRAFFIC STATISTICS OF THE EUR/SAM CORRIDOR

2008





INDEX

Data Collection 

Global Figures of the EUR/SAM Corridor



DATA COLLECTION (I)

THE NECESSARY FLIGHT PLAN INFORMATION TO PERFORM THIS STUDY IS OBTAINED FROM PALESTRA (AENA'S DATA BASE):

- ❖ THIS FLIGHT PLAN DATA CONTAINS INITIAL FLIGHT PLAN INFORMATION THAT IS UPDATED BY RADAR AND CONTROLLERS WITH PILOT POSITION REPORTS.

- ❖ THE AIR TRAFFIC MOVEMENTS REFLECTED IN THIS STUDY ARE:
 - ALL AIRCRAFTS USING UN741, UN866, UN873 AND UN857 WHOSE FLIGHT PLANS CONTAINS INFORMATION ABOUT EDUMO, TENPA, IPERA AND GUNET FIX POINTS.

 - AIRCRAFT USING THE RANDOM ROUTE.





DATA COLLECTION (II)

- ❖ THIS STUDY DOES NOT REFLECT:
 - ✓ TRAFFIC NOT OVER-FLYING CANARIES FIR/UIR.
 - ✓ DATA FROM EAST-WEST FLOWS CROSSING THE EUR-SAM CORRIDOR.
 - ✓ TRAFFIC TO THE SOUTH ORIGIN- DESTINATION CAPE VERDE.





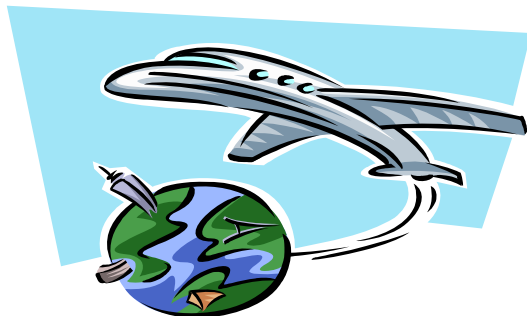
INDEX

Data Collection
Global Figures of the EUR/SAM Corridor ✓



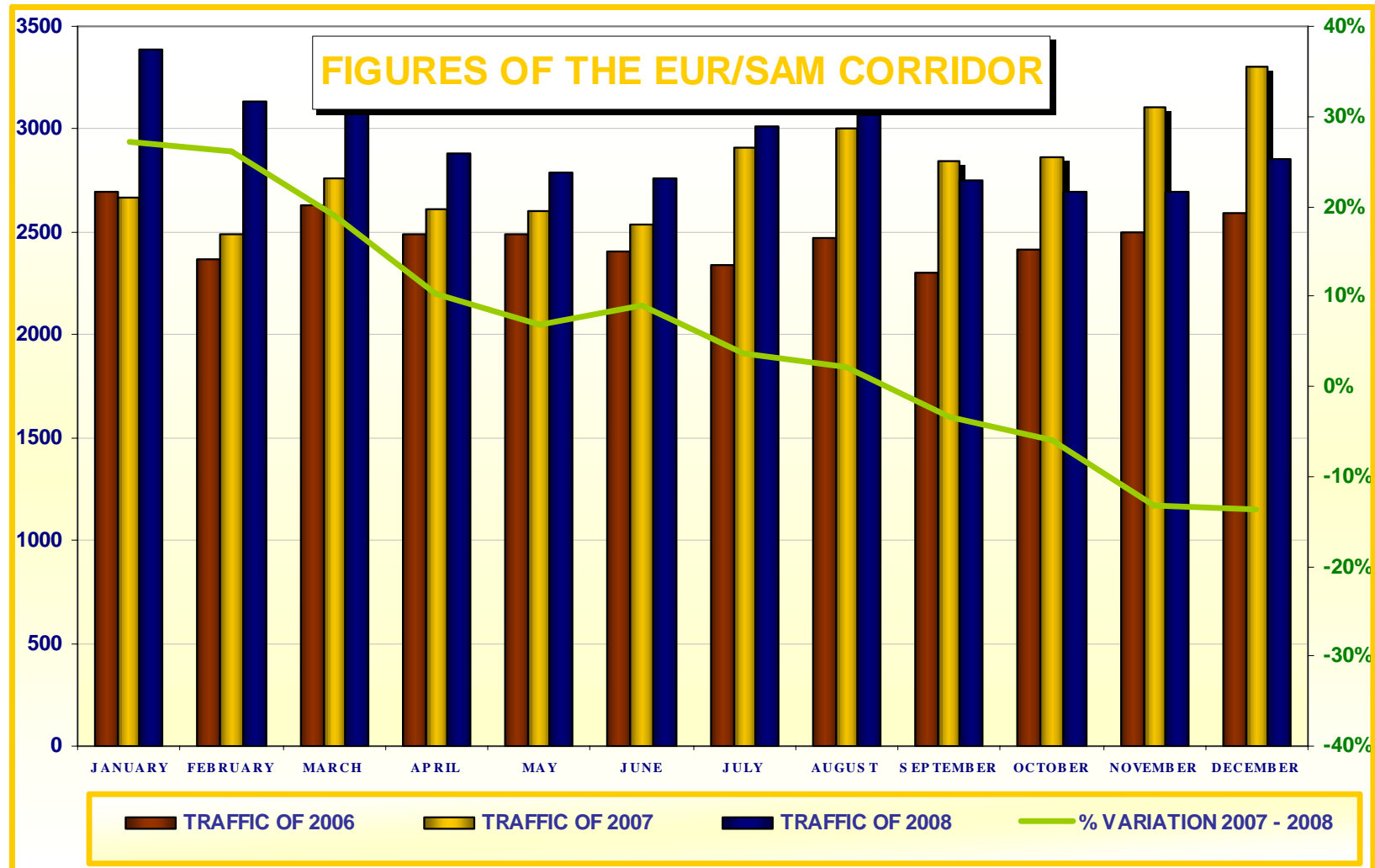
GLOBAL FIGURES

MONTH	SOUTHBOUND		NORTHBOUND		TOTAL TRAFFIC IN THE CORRIDOR						% VARIATION	
	2007	2008	2007	2008	2006	DAILY	2007	DAILY	2008	DAILY	2006 - 2007	2007 - 2008
JANUARY	1290	1577	1373	1796	2694	86	2663	85	3386	109	-1%	27%
FEBRUARY	1239	1452	1248	1683	2364	84	2487	88	3135	108	5%	26%
MARCH	1404	1531	1360	1757	2633	84	2764	89	3288	106	5%	19%
APRIL	1321	1418	1293	1465	2485	82	2614	87	2883	96	5%	10%
MAY	1270	1363	1336	1423	2488	80	2606	84	2786	89	5%	7%
JUNE	1244	1361	1289	1402	2403	80	2533	84	2763	92	5%	9%
JULY	1414	1458	1495	1554	2339	75	2909	93	3012	97	24%	4%
AUGUST	1449	1477	1558	1596	2474	79	3007	97	3073	99	22%	2%
SEPTEMBER	1403	1309	1441	1440	2301	76	2844	94	2749	91	24%	-3%
OCTOBER	1478	1355	1388	1338	2416	77	2866	92	2693	86	19%	-6%
NOVEMBER	1581	1348	1527	1347	2498	83	3108	103	2695	89	24%	-13%
DECEMBER	1611	1362	1696	1494	2592	83	3307	106	2856	92	28%	-14%
AVERAGE	1392	1418	1417	1525	2474	81	2809	92	2943	96	14%	5%





GLOBAL FIGURES





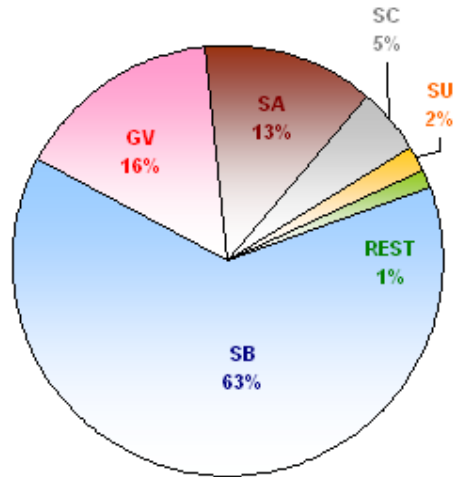
NUMBER OF MOVEMENTS PER AIRCRAFT OPERATOR

AIRCRAFT OPERATOR	TRAFFIC OF 2007	TRAFFIC OF 2008	% VARIATION 2007 - 2008
TAP	6306	7736	22.7%
TAM	3430	5014	46.2%
IBE	4550	4652	2.2%
AFR	2993	3331	11.3%
TCV	1355	1505	11.1%
ARG	1435	1102	-23.2%
AEA	1056	1050	-0.6%
DLH	789	975	23.6%
VRH	875	971	11.0%
MPD	1159	912	-21.3%
LAN	740	749	1.2%
REST	9020	7323	-18.8%





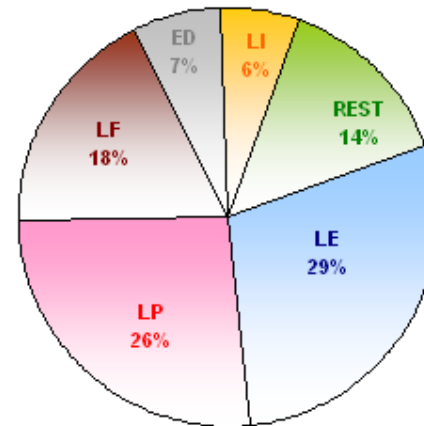
NUMBER OF MOVEMENTS PER GEOGRAPHICAL AREA



COUNTRY *	2007	2008	VAR %
SB	21283	22394	5%
GV	4833	5505	14%
SA	4478	4522	1%
SC	1774	1689	-5%
SU	600	681	14%
REST	740	528	-29%

* ORIGIN / DESTINATION

COUNTRY *	2007	2008	VAR %
LE	9904	10173	3%
LP	8153	9307	14%
LF	5600	6284	12%
ED	2301	2456	7%
LI	2532	2235	-12%
REST	5218	4864	-7%





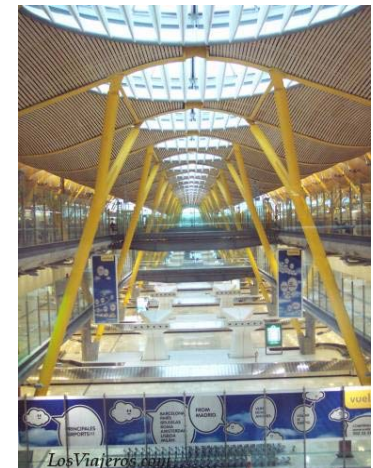
NUMBER OF MOVEMENTS PER MAIN AIRPORT AND ROUTE (I)

FIGURES OF 2008

MAIN AIRPORT:	SBGR					
% CORRIDOR:	17%					
		ATS ROUTE	SOUTHBOUND	NORTHBOUND	TOTAL TRAFFIC	% PER ROUTE
		RAINDOM				
		UII-741	4812		4812	40%
		UII-866		4329	4329	36%
		UII-873	498	1649	2147	18%
		UII-857	318	397	715	6%
		TOTAL	5628	6375	12003	



MAIN AIRPORT:	LEMD					
% CORRIDOR:	14%					
		ATS ROUTE	SOUTHBOUND	NORTHBOUND	TOTAL TRAFFIC	% PER ROUTE
		RAINDOM				
		UII-741	734	661	1395	14%
		UII-866	2446	72	2518	26%
		UII-873	830	1326	2156	22%
		UII-857	750	672	1422	15%
		TOTAL	4760	4867	9627	



MAIN AIRPORT:	LPPT					
% CORRIDOR:	12%					
		ATS ROUTE	SOUTHBOUND	NORTHBOUND	TOTAL TRAFFIC	% PER ROUTE
		RAINDOM				
		UII-741	1295	1	1296	15%
		UII-866	2	1719	1721	20%
		UII-873	2560	2326	4886	57%
		UII-857	370	282	652	8%
		TOTAL	4227	4328	8555	



NUMBER OF MOVEMENTS PER MAIN AIRPORT AND ROUTE (II)

FIGURES OF 2008

MAIN AIRPORT: **LFPG**

% CORRIDOR: **9%**

ATS ROUTE	SOUTHBOUND	NORTHBOUND	TOTAL TRAFFIC	% PER ROUTE
RANDOM				
UH-741	2015	1	2016	33%
UH-866		1613	1613	27%
UH-873	402	1558	1960	32%
UH-857	477	4	481	8%
TOTAL	2894	3176	6070	



MAIN AIRPORT: **SAEZ**

% CORRIDOR: **6%**

ATS ROUTE	SOUTHBOUND	NORTHBOUND	TOTAL TRAFFIC	% PER ROUTE
RANDOM				
UH-741	1591	2	1593	36%
UH-866		1589	1589	35%
UH-873	218	386	604	13%
UH-857	371	330	701	16%
TOTAL	2180	2307	4487	



MAIN AIRPORT: **SBGL**

% CORRIDOR: **6%**

ATS ROUTE	SOUTHBOUND	NORTHBOUND	TOTAL TRAFFIC	% PER ROUTE
RANDOM				
UH-741	520		520	13%
UH-866		259	259	6%
UH-873	924	1872	2796	68%
UH-857	485	81	566	14%
TOTAL	1929	2212	4141	



NUMBER OF MOVEMENTS PER MAIN AIRPORT AND ROUTE (III)

FIGURES OF 2008

MAIN AIRPORT:	GVAC	ATS ROUTE	SOUTHBOUND	NORTHBOUND	TOTAL TRAFFIC	% PER ROUTE
% CORRIDOR:	5%	RANDOM				
		UII-741	60	1	61	2%
		UII-866	9	12	21	1%
		UII-873	1676	1755	3431	90%
		UII-857	132	160	292	8%
		TOTAL	1877	1928	3805	



MAIN AIRPORT:	EDDF	ATS ROUTE	SOUTHBOUND	NORTHBOUND	TOTAL TRAFFIC	% PER ROUTE
% CORRIDOR:	3%	RANDOM				
		UII-741	566	1	567	30%
		UII-866		694	694	37%
		UII-873	85	266	351	19%
		UII-857	170	87	257	14%
		TOTAL	821	1048	1869	



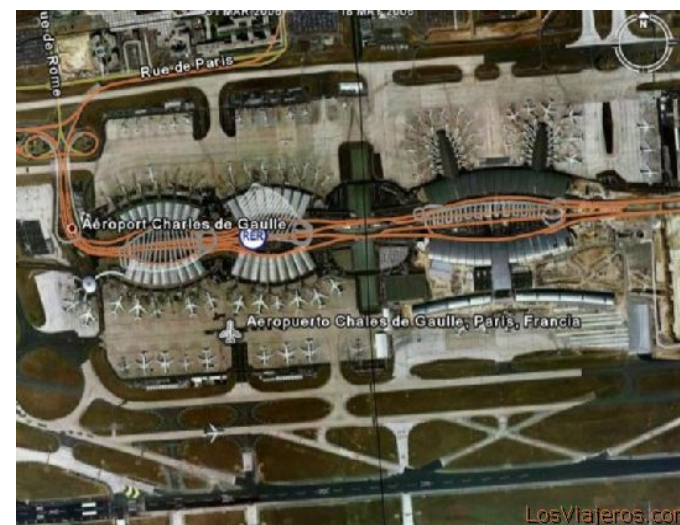
MAIN AIRPORT:	SCEL	ATS ROUTE	SOUTHBOUND	NORTHBOUND	TOTAL TRAFFIC	% PER ROUTE
% CORRIDOR:	2%	RANDOM				
		UII-741	734	664	1398	83%
		UII-866	91	2	93	6%
		UII-873		142	142	8%
		UII-873	9	29	38	2%
		UII-857	5	12	17	1%
		TOTAL	839	849	1688	



MAIN CITY PAIRS

FIGURES OF 2008

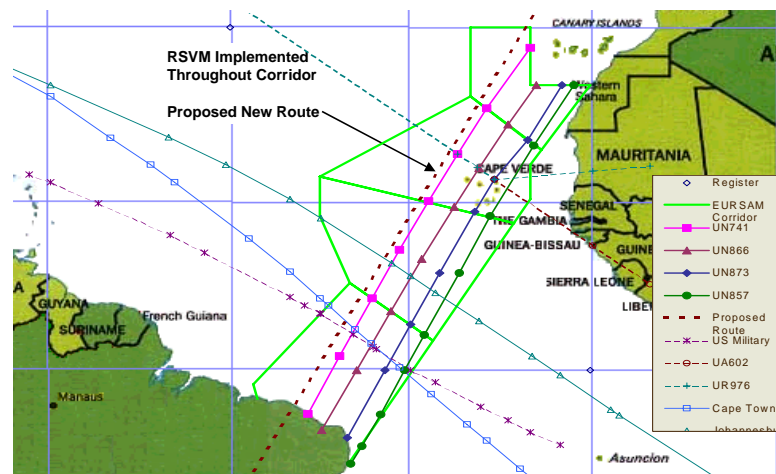
CITY PAIR	TOTAL	% TOTAL
SBGR <-> LFPG	3169	9.0%
SAEZ <-> LEMD	3156	8.9%
SBGR <-> LEMD	2494	7.1%
SBGL <-> LFPG	1773	5.0%
SCEL <-> LEMD	1631	4.6%
GVAC <-> LPPT	1328	3.8%
SBGR <-> EDDF	1309	3.7%
SBGR <-> EGLL	1308	3.7%
SBGL <-> LPPT	1214	3.4%
SBGR <-> LPPT	1150	3.3%
GVNP <-> LPPT	1061	3.0%
SBGR <-> LIMC	835	2.4%
SBRF <-> LPPT	738	2.1%
SAEZ <-> LFPG	720	2.0%
SBGL <-> LEMD	697	2.0%
SBSV <-> LPPT	682	1.9%
SUMU <-> LEMD	675	1.9%
SBBR <-> LPPT	659	1.9%
SBFZ <-> LPPT	651	1.8%
SBNT <-> LPPT	531	1.5%





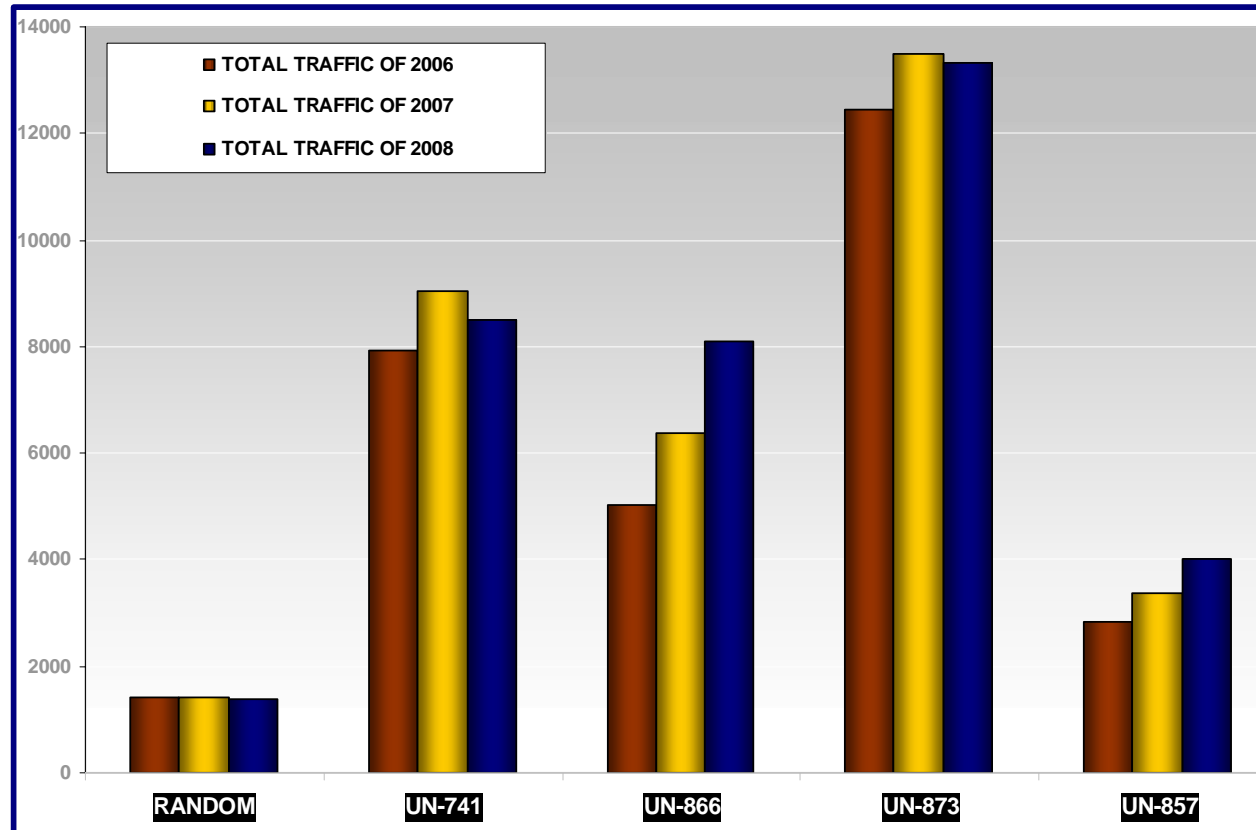
NUMBER OF MOVEMENTS PER ATS ROUTE

ATS ROUTE	SOUTHBOUND		NORTHBOUND		TOTAL TRAFFIC				ROUTE
	FIGURES OF		FIGURES OF		FIGURES OF	%	FIGURES OF	%	% VARIATION
	2007	2008	2007	2008	2007		2008		2007 - 2008
RANDOM	753	735	671	664	1424	4.2%	1399	4.0%	-2%
UN-741	7568	8395	1471	91	9039	26.8%	8486	24.0%	-6%
UN-866	637	18	5752	8095	6389	19.0%	8113	23.0%	27%
UN-873	5883	5628	7601	7686	13484	40.0%	13314	37.7%	-1%
UN-857	1863	2248	1509	1759	3372	10.0%	4007	11.3%	19%





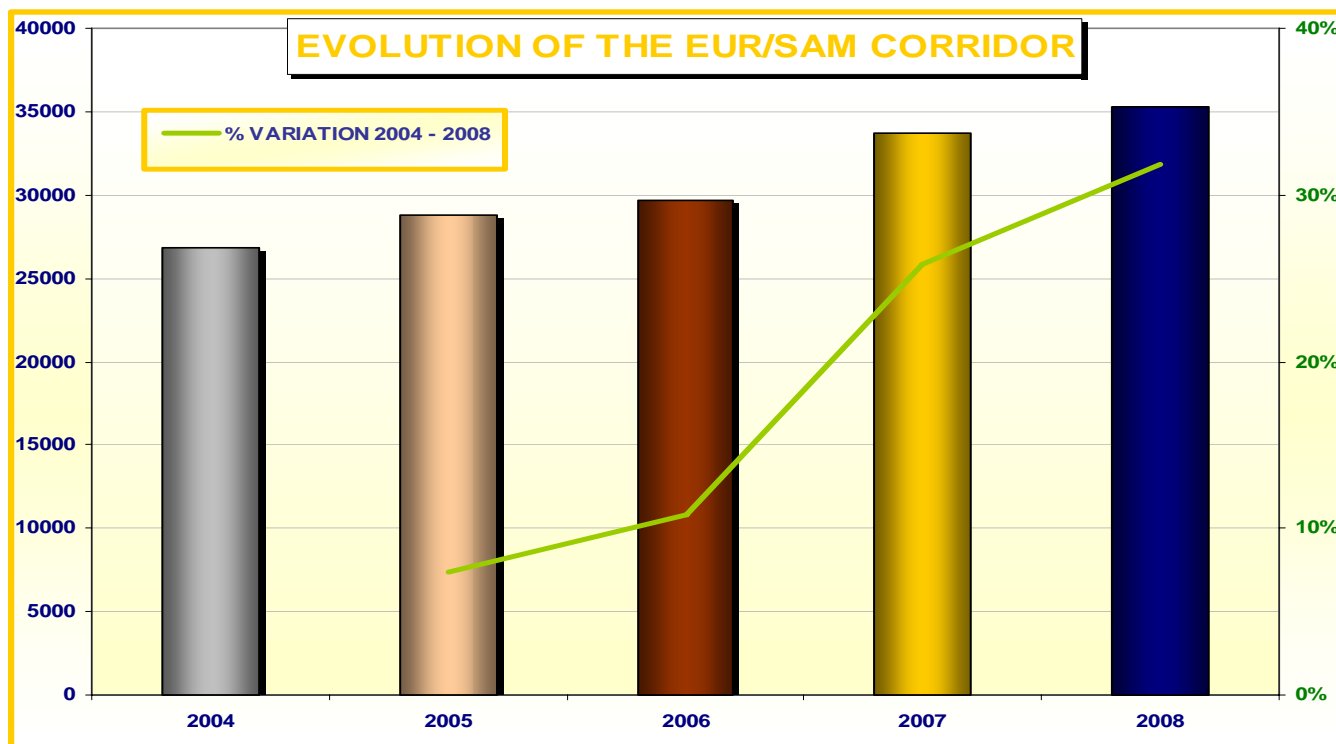
NUMBER OF MOVEMENTS PER ATS ROUTES





YEARLY EVOLUTION IN THE EUR/SAM CORRIDOR

FIGURES OF	SOUTHBOUND	NORTHBOUND	TOTAL TRAFFIC IN THE CORRIDOR	% INCREASE FROM 2004
2004	13108	13685	26793	-
2005	14088	14674	28762	7.3%
2006	14651	15036	29687	10.8%
2007	16704	17004	33708	25.8%
2008	17024	18295	35319	31.8%





GLOBAL FIGURES JANUARY – APRIL 2009

MONTH	SOUTHBOUND		NORTHBOUND		TOTAL TRAFFIC IN THE CORRIDOR						% VARIATION	% VARIATION
	2008	2009	2008	2009	2007	DAILY	2008	DAILY	2009	DAILY	2007 - 2008	2008 - 2009
JANUARY	1590	1453	1796	1346	2663	85	3386	109	2799	90	27%	-17%
FEBRUARY	1452	1171	1683	1205	2487	88	3135	108	2376	84	26%	-24%
MARCH	1531	1290	1757	1390	2764	89	3288	106	2680	86	19%	-18%
APRIL	1418	1140	1465	1222	2614	87	2883	96	2362	78	10%	-18%
MAY	1363		1423		2606	84	2786	89			7%	
JUNE	1361		1402		2533	84	2763	92			9%	
JULY	1458		1554		2909	93	3012	97			4%	
AUGUST	1477		1596		3007	97	3073	99			2%	
SEPTEMBER	1309		1440		2844	94	2749	91			-3%	
OCTOBER	1355		1338		2866	92	2693	86			-6%	
NOVEMBER	1348		1347		3108	103	2695	89			-13%	
DECEMBER	1362		1494		3307	106	2856	92			-14%	
AVERAGE	1419	1264	1525	1291	2809	92	2943	96	2554	85	5%	-20%



AIR TRAFFIC STATISTICS OF THE EUR/SAM CORRIDOR

2008

